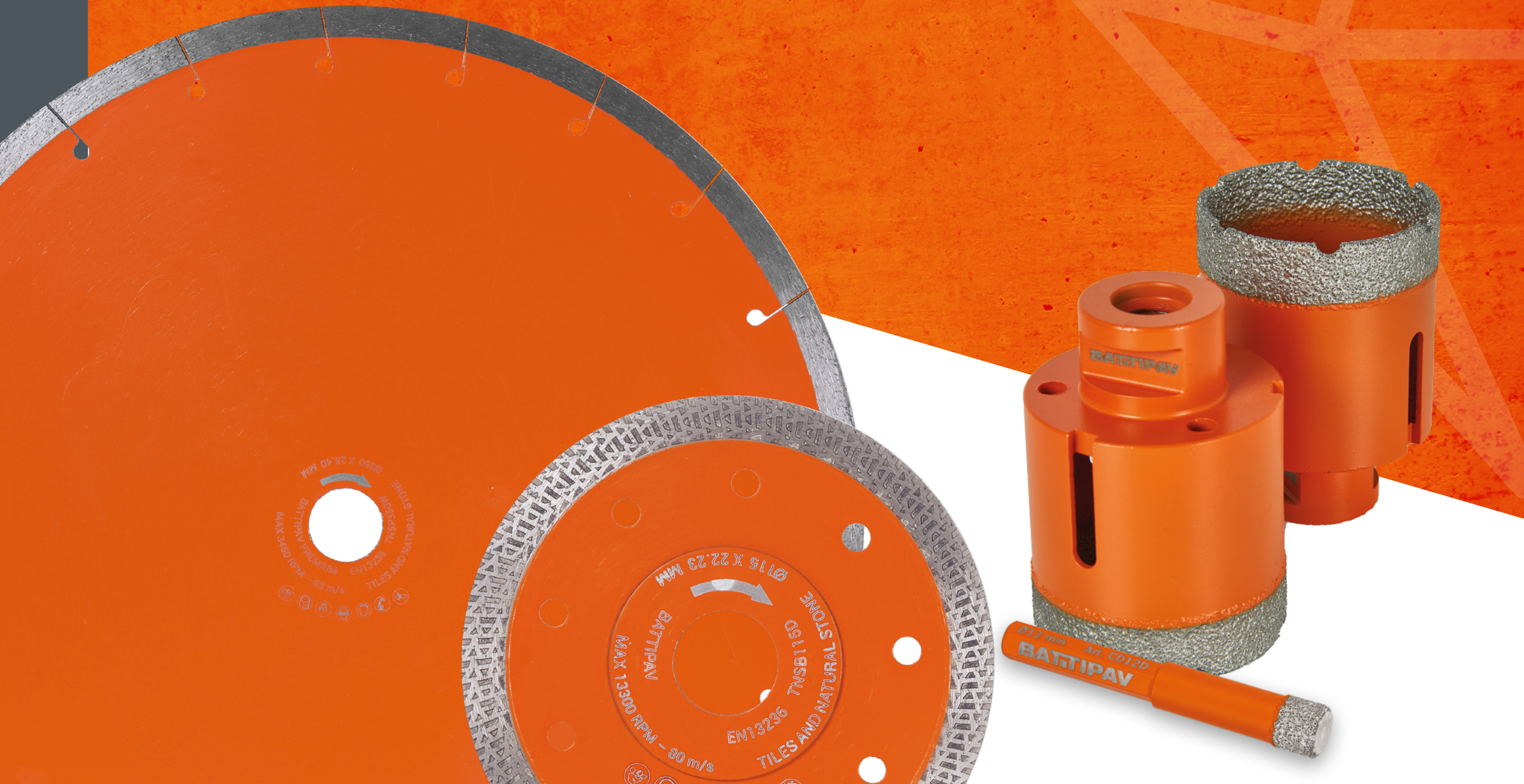


BATTIPAV

High Performance Diamond Discs



TILES AND NATURAL STONE

For sawing wall and floor tiles as well as natural stone such as marble and granite.



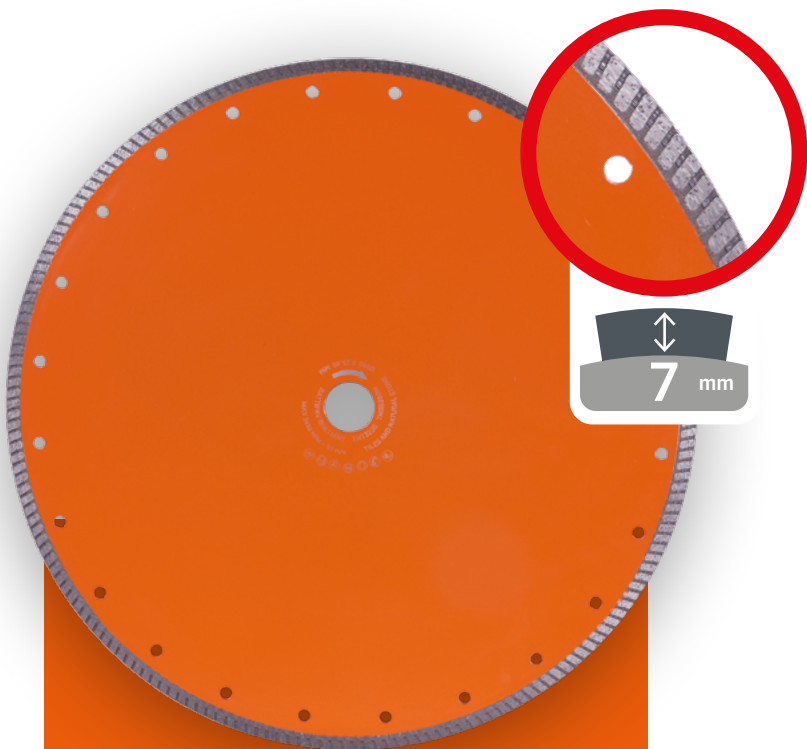
MARBLE



GRANITE



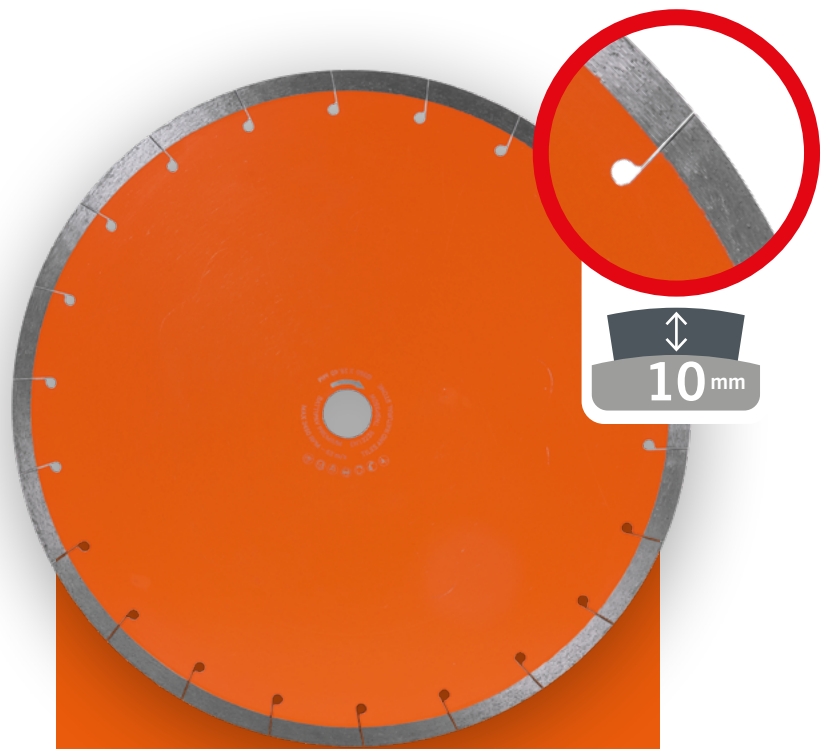
PORCELAIN
STONEWARE



BESTE**VER**



Ø mm	Ø Hole mm	Article
200	25,40	TNSB200W
250	25,40	TNSB250W
300	25,40	TNSB300W
350	25,40	TNSB350W



PREMIUM



Ø mm	Ø Hole mm	Article
200	25,40	TNSP200W
250	25,40	TNSP250W
300	25,40	TNSP300W
350	25,40	TNSP350W

TILES AND NATURAL STONE

For sawing wall and floor tiles as well as natural stone such as marble and granite.



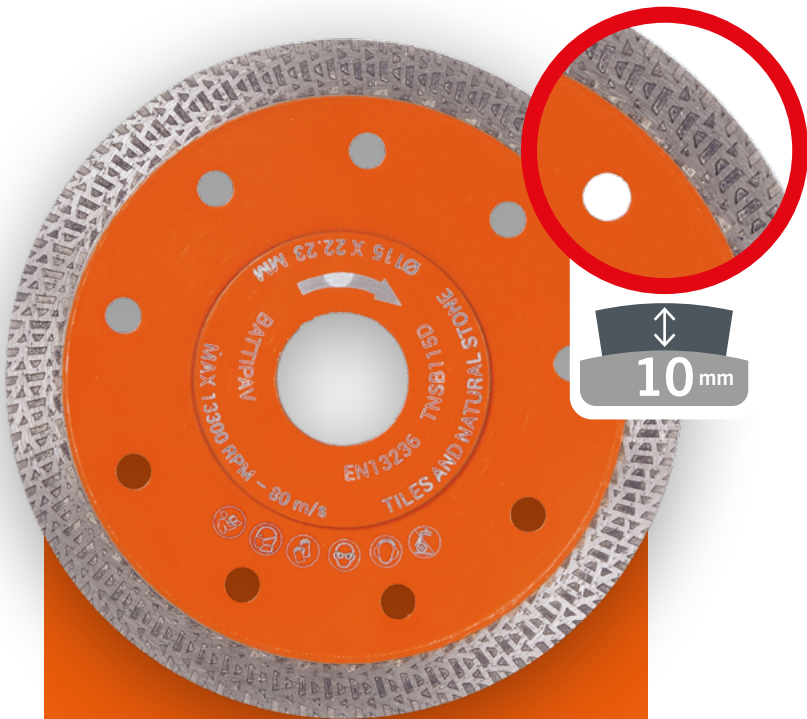
MARBLE



GRANITE



PORCELAIN
STONEWARE



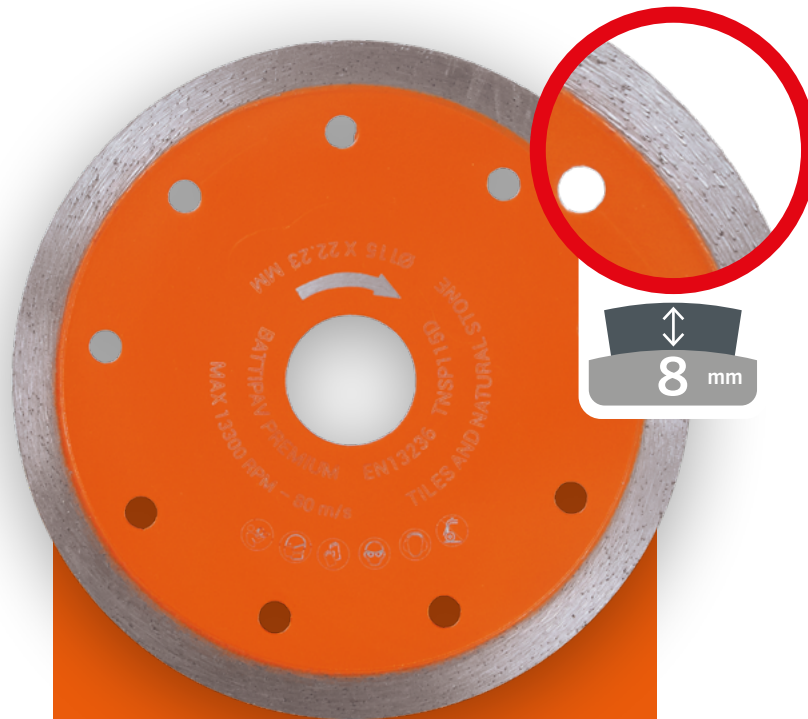
10 mm



BESTEVEVER



Ø mm	Ø Hole mm	Article
115	22,23	TNSB115D
125	22,23	TNSB125D



8 mm



PREMIUM



Ø mm	Ø Hole mm	Article
115	22,23	TNSP115D
125	22,23	TNSP125D

DRILL SET

For porcelain gres and natural stone.
Use on an angle grinder.



MARBLE



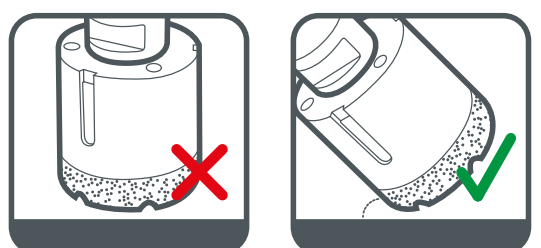
GRANITE



PORCELAIN
STONEWARE



Ø mm	Article	h. MAX mm
6	HG06D	35
8	HG08D	35
10	HG10D	35
12	HG12D	35
20	HG20D	50
25	HG25D	50
35	HG35D	50
40	HG40D	50
55	HG55D	50
70	HG70D	50



START WITH A
30 / 45° DEGREE

Ø mm	Article	h. MAX mm
20 / 25 / 35 / 55 / 70	HGSETD	50

DRILL SET FOR PORCELAIN GRES AND NATURAL STONE

- for use on an angle grinder
- › Drills fitted with M14 connection
 - › To use on an angle grinder without water-cooling and peripheral speed min. 10.000 - 12.000 rpm.
 - › Delivered in aluminium protection case



DRILL SET

For porcelain gres and natural stone.
Use on a drilling machine.

BATTIPAV
High Performance Diamond Discs



MARBLE



GRANITE



**PORCELAIN
STONEWARE**



Ø mm	Article	h. MAX mm
6	CD06D	30
8	CD08D	40
10	CD10D	40
12	CD12D	40

Ø mm	Article	h. MAX mm
6 / 8 / 10 / 12	CDSETD	35 / 40

DRILL SET FOR PORCELAIN GRES AND NATURAL STONE

for use on a drilling machine

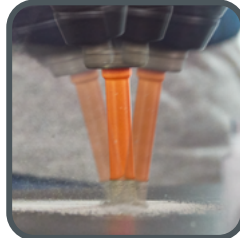
- › Drills fitted with hexagon system for optimal grip on the drill chuck
- › Fitted with wax lubrication



**MAXIMUM
SPEED OF DRILL**



**BEGIN WITH A
30 / 45° DEGREE**



**MAKE CIRCULAR
MOVEMENTS**



COOLING WAX
to ensure longer
tool life
Art. CER18





Dry use



Wet use only



Segment
height



Drilling
machine



Angle Grinder



Building
saw

BATTIPAV
High Performance Diamond Discs



Z. i. 2 - Via Cavatorta, 6/1 | 48033 Cotignola (Ra) | ITALY
www.battipav.com | sales@battipav.com